



WEDDING
BY THE
BOSPHORUS

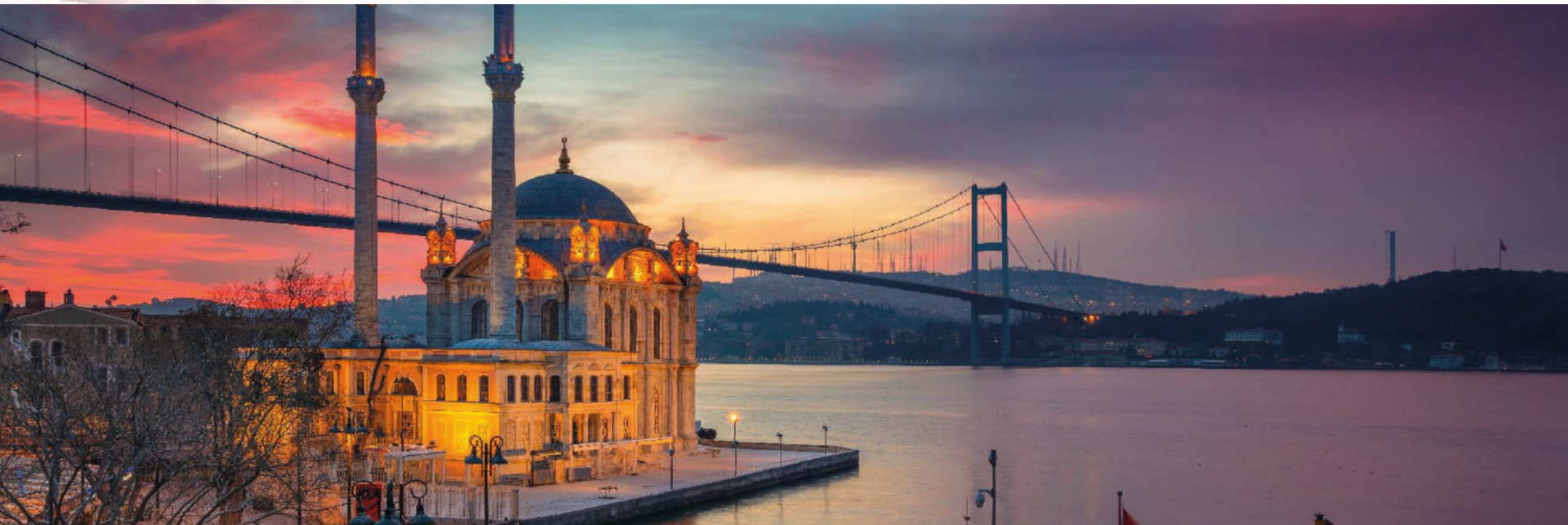
swissôtel THE BOSPHORUS
ISTANBUL

WHERE IS ISTANBUL?



2 CONTINENT, 1 CITY: ISTANBUL

- Istanbul was the capital of Roman, Byzantine and Ottoman Empires
- Bosphorus is a straight that divides the city into 2: as Asia & Europe continents
 - The historical peninsula:
Blue Mosque, Hagia Sophia, Topkapi Palace, Grand Bazaar
 - Striking Multireligious Identity
 - Arts, Culture and Entertainment





Swissôtel

The Maiden's Tower is a small, round, stone tower situated in the Bosphorus Strait, between the European and Asian sides of Istanbul. It is believed to have been built by the Byzantine Emperor Constantine I in the 5th century AD. The tower is said to be haunted by a ghost, and it is a popular spot for couples to get married. The tower is also a popular spot for tourists to visit, and it is a beautiful sight to see from the water.

SWISSOTEL THE BOSPHORUS, ISTANBUL, A UNIQUE FIVE STAR HOTEL LOCATED RIGHT IN THE CITY CENTER!

- The hotel is located in the city center with 65 acres of gardens and adjacent to Dolmabahce Palace
- 10 minutes walking distance to shopping district Nisantasi, full off designer shops, exclusive restaurants
 - 10 minutes walking distance to Istanbul Convention & Exhibition Center
 - 45 minutes drive to Istanbul Airport
 - 60 minutes drive to Sabiha Gokcen Airport
 - 15 minutes drive to the old city
- 6 hours 15 minutes away from Mumbai to Istanbul Airport, 5 hours 50 minutes from Delhi to Istanbul



Best Organization for The Happiest Day of Your Life



Dream weddings are enhanced by the spectacular view of the Bosphorus and Swissôtel's immaculate service. Leave us the details and enjoy every moment of your dream night with Swissôtel The Bosphorus, Istanbul quality and elegance.



Signature Loft



Ambassador Suite



Executive Bosphorus Room



Signature Loft



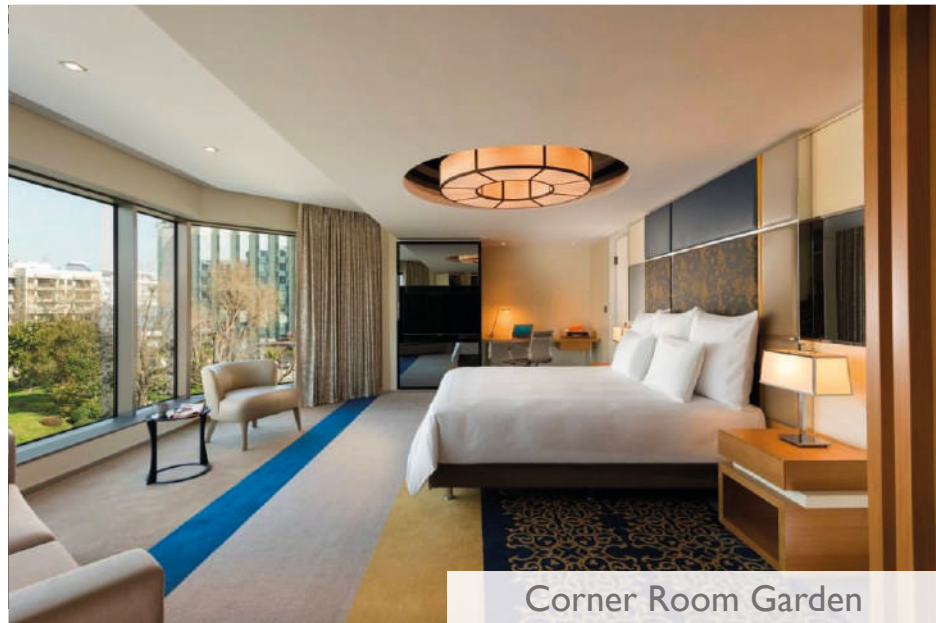
Corner Room Bosphorus



Advantage Bosphorus View



Pool Room



Corner Room Garden



We offer endless menu choices including extensive innovative and healthy dining options. Together with a rich selection of menu options reflecting our renowned culinary heritage, we are delighted to craft customized menus that would best accommodate your unique needs and expectations.

We look forward to welcoming you at Swissôtel The Bosphorus, Istanbul in the near future and hope you let us create memorable events for you and your esteemed guests.

Swissôtel The Bosphorus, Istanbul



GABBRO

330 M²

WEDDING
BY THE
BOSPHORUS

swissôtel THE BOSPHORUS
ISTANBUL



WEDDING
BY THE
BOSPHORUS

GABBRO

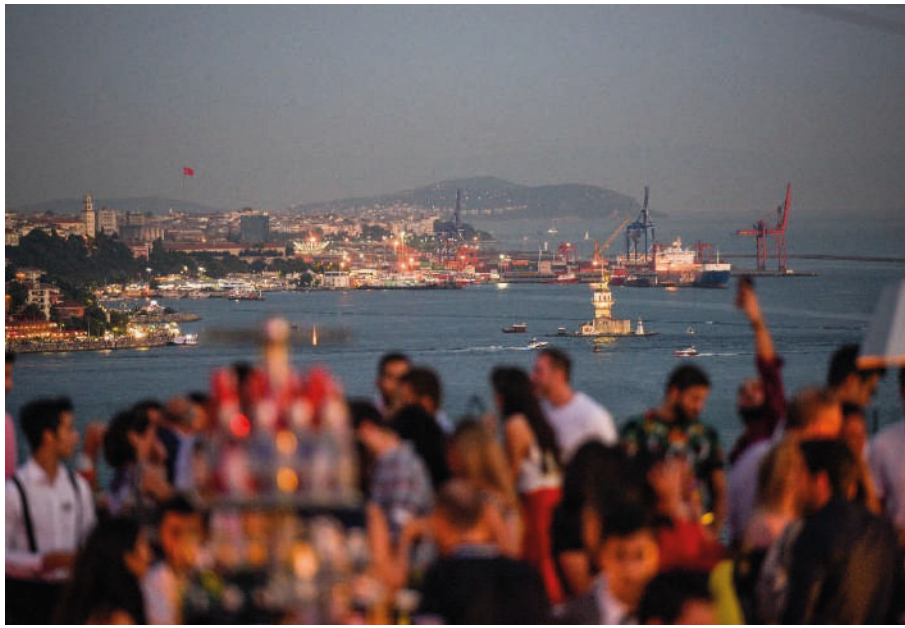
swissôtel THE BOSPHORUS
ISTANBUL



16 ROOF
745 M²

WEDDING
BY THE
BOSPHORUS

swissôtel THE BOSPHORUS
ISTANBUL



WEDDING
BY THE
BOSPHORUS

16 ROOF

swissôtel THE BOSPHORUS
ISTANBUL



VENUES



FUJI BALLROOM
1070 M²





WEDDING
BY THE
BOSPHORUS

FUJI BALLROOM

swissôtel THE BOSPHORUS
ISTANBUL



ASUKA
522 M²



WEDDING
BY THE
BOSPHORUS

ASUKA

swissôtel THE BOSPHORUS
ISTANBUL



SULTAN PARK
1200 M²








CHALET GARDEN

450 M²

WEDDING
BY THE
BOSPHORUS

swissôtel THE BOSPHORUS
ISTANBUL





[Click here for the video](#)

INDIAN WEDDING AT SWISSOTEL

Experience authentic hospitality every step of the celebration, from the Welcome reception, the Mendhi ceremony and the Baraat to the reception with all of your family and friends.

WEDDING
BY THE
BOSPHORUS

swissôtel THE BOSPHORUS
ISTANBUL



WEDDING
BY THE
BOSPHORUS

WELCOME RECEPTION AT CHALET

swissôtel THE BOSPHORUS
ISTANBUL









*SANGEET
AT FUJI BALLROOM*



WEDDING
BY THE
BOSPHORUS

FUJI BALLROOM

swissôtel THE BOSPHORUS
ISTANBUL



Contact Information

Adres :Visnezade Mah.Acisu Sok. NO. 19
Macka Besiktas Istanbul, Turkey

Phone :

+90 212 326 8271

+90 544 326 8269

E mail : event.istanbul@swissotel.com